



RNC MINERALS

NEWS RELEASE

RNC Minerals Announces New Visible Gold Discovery at Surface and High Grade Intersections Revealed by Ongoing Review of Historic Higginsville Database; Recent RNC Drilling Extends Boundaries of Deposits in Open Pit Pipeline Summary

Historical Database Review – Corona Project

- *RNC's ongoing review of Higginsville Gold Operations ("HGO") historical mineral resources and drill results has confirmed the potential of the Corona deposit as a future high-grade open pit and/or underground operation.*
 - *Highlights of historical drill results include^{1,2}:*
 - *VIND047: 657.9 g/t over 2.3m from 181.1 m*
 - *VIND049: 225.2 g/t over 1.9m from 201.5 m*
 - *VIND076: 60.9 g/t over 2.3m from 197.2 m*
 - *VIND092: 30.6 g/t over 2.05m from 165.3 m, including, 147.0 g/t over 0.6 m*
- 1. *All drilling intervals are down-hole lengths. Estimated true widths are expected to range from 60 to 70% of the downhole lengths.*
- 2. *Intersections previously reported by Alacer Gold Corp. (news release, May 7, 2012 and August 1, 2012).*
- *The Corona mineralization remains open up-dip, along-strike and down-dip*
- *The Higginsville Resource Review has also identified further high grade targets for follow-up analysis and drilling at Hidden Secret and other prospects.*

Hidden Secret and Mousehollow Drilling

- *Recent RNC drilling has extended mineralization at the Hidden Secret (HDS) and Mousehollow (MOH) projects, which now form part of RNC's near-term mine plan.*
 - *Intersection highlights from RNC's drill program include¹:*
 - *HDSR0136: 15.1 g/t over 4 m from 24 m, including 47.8 g/t over 1 m*
 - *HDSR085: 24.8 g/t over 4 m from 17 m, including 92.6 g/t over 1 m*
 - *MOHR0055: 26.1 g/t over 3 m from 22 m*
 - *MOHR0075: 3.3 g/t over 19 m from 0 m*
- 1. *Estimated true widths.*
- *Visible gold has been discovered in a surface sample taken at the Hidden Secret project.*

TORONTO, February 27, 2020 - RNC Minerals (TSX: RNX) ("RNC" or the "Company" - <https://www.commodity-tv.com/play/rnc-minerals-increasing-gold-production-up-to-110k000-oz-in-2020/>) is pleased to announce initial results from the 2020 exploration program at its Higginsville ("HGO") operations. Recent drilling at Hidden Secret and Mousehollow has returned strong results, driving the expansion of proposed open pit dimensions at both projects. As part of an ongoing review of the historic drilling database at Higginsville, high grade drill intersections have been revealed at the

Corona prospect which is located 2.5km from the Higginsville mill. Additionally, RNC is also pleased to announce the discovery of visible gold in a surface sample taken at the Hidden Secret project.

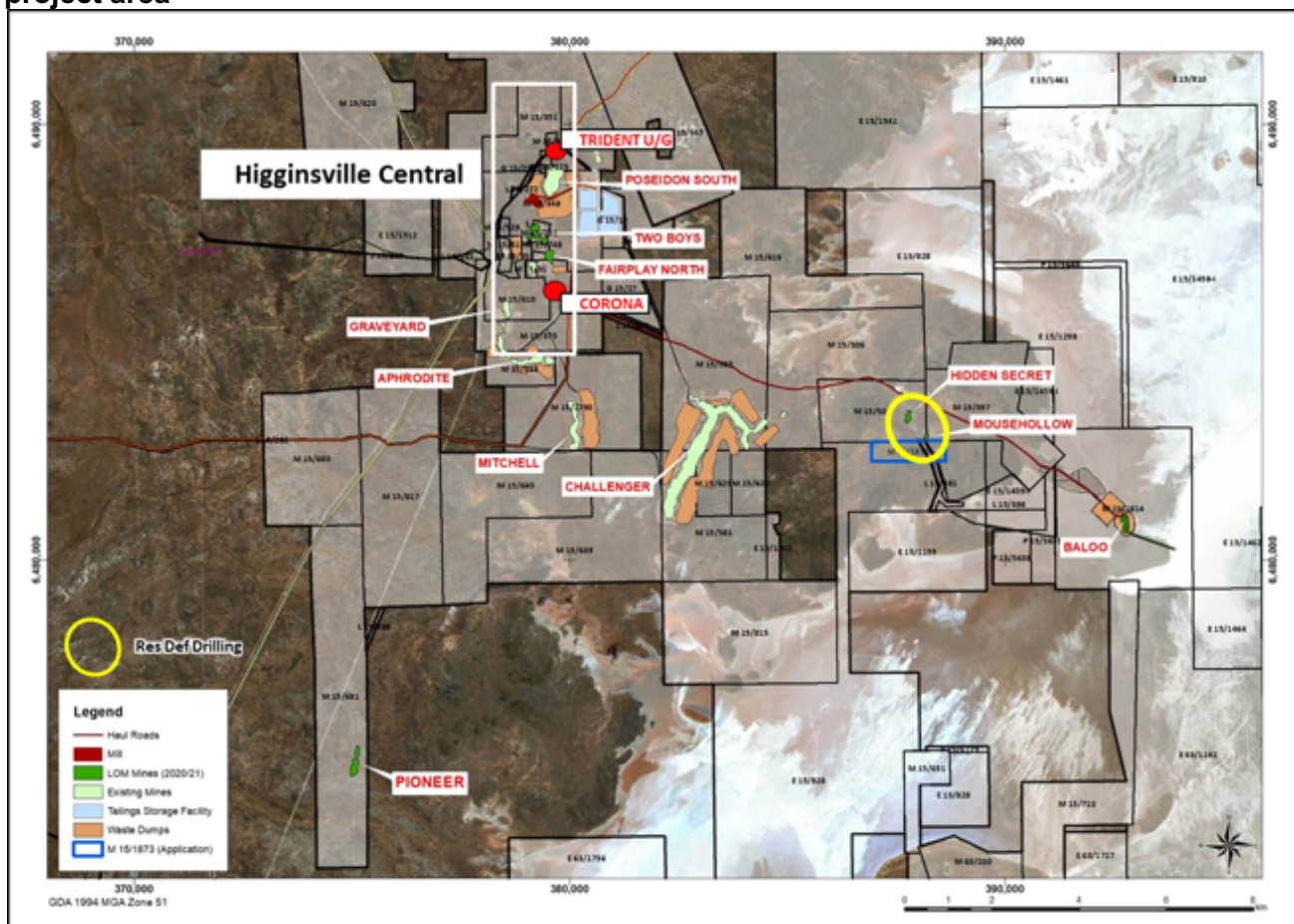
Paul Andre Huet, Chairman & CEO, commented: “The early results of our recent drilling and historical data review at Hidden Secret, Mousehollow and Corona are very positive for the growing project pipeline at HGO.

As part of RNC’s due diligence process during the acquisition of HGO last year, it became apparent that little exploration had been carried out across the property for many years, largely due to the onerous royalty covering a large portion of the tenements. The willingness of Morgan Stanley to work with us to reduce the royalty burden has opened up HGO for a renewed exploration program providing us economic incentive to explore and develop these areas to benefit all our stakeholders. While these early results are encouraging, work has only just begun and we are looking forward to the results of our renewed exploration focus on the recently unlocked 1,800km² Higginsville land package.”

Recent Hidden Secret and Mousehollow Drilling

Hidden Secret and Mousehollow are located within the Eundynie historical mining centre 10 km east of the HGO processing plant with mine workings dating back to the early 1900s (see Figure 1).

Figure 1: Location of Hidden Secret and Mousehollow drilling and the Higginsville Central project area



Following the re-negotiation of the Morgan Stanley royalty at HGO, RNC has completed a total of 204 reverse circulation (“RC”) drill holes for 8,108 metres at Hidden Secret and Mousehollow. The drilling has confirmed the high grade nature of the mineralization (approximately 2.0 to 2.5 g/t) at both projects and has also extended mineralization along strike and down dip (see Figures 3, 4). Hidden Secret mineralization now has a strike length over 200 metres and a down-dip extent of 170 metres. Mousehollow currently totals 350 metres in strike length and has a down-dip extent of 150 metres.

Highlights from the drilling are listed below and show that mineralization extends to surface (MOHR0075), while also indicating that it is open at depth. Tables showing complete results and drill hole locations can be found at the end of this release.

Hidden Secret¹:

- HDSR0076: 5.2 g/t over 3 m from 22 m
- HDSR085: 24.8 g/t over 4 m from 17 m, including 92.6 g/t over 1 m
- HDSR086: 5.6 g/t over 3 m from 8 m
- HDSR098: 6.0 g/t over 7 m from 45 m, including 12.2 g/t over 3 m
- HDSR0136: 15.1 g/t over 4 m from 24 m, including 47.8 g/t over 1 m
- HDSR055: 4.0 g/t over 3 m from 24 m

Mousehollow¹:

- MOHR0055: 26.1 g /t over 3 m from 22 m
- MOHR0075: 3.3 g/t over 19 m from 0 m
- MOHR0078: 8.4 g/t over 4 m from 13 m
- MOHR0111: 7.9 g/t over 3 m from 30 m
- MOHR0106: 2.8 g/t over 8 m from 49 m

1. *Drillhole intervals are estimated true widths.*

Further drilling is planned through the second quarter of 2020 to close-off the recently defined extensions to the Hidden Secret-Mouse Hollow mineralization. Final mine designs will then be completed ahead of near term mining.

Visible Gold mineralization found in surface sample at Hidden Secret

As part of the Company's normal pre-mining procedures, surface samples were collected for a metallurgical test program for the Hidden Secret and Mousehollow projects. When collecting the samples, visible gold was observed in an outcropping quartz vein within the boundary of the proposed Hidden Secret open pit (see Figure 2).

Figure 2: Visible gold circled in red in surface sample at Hidden Secret

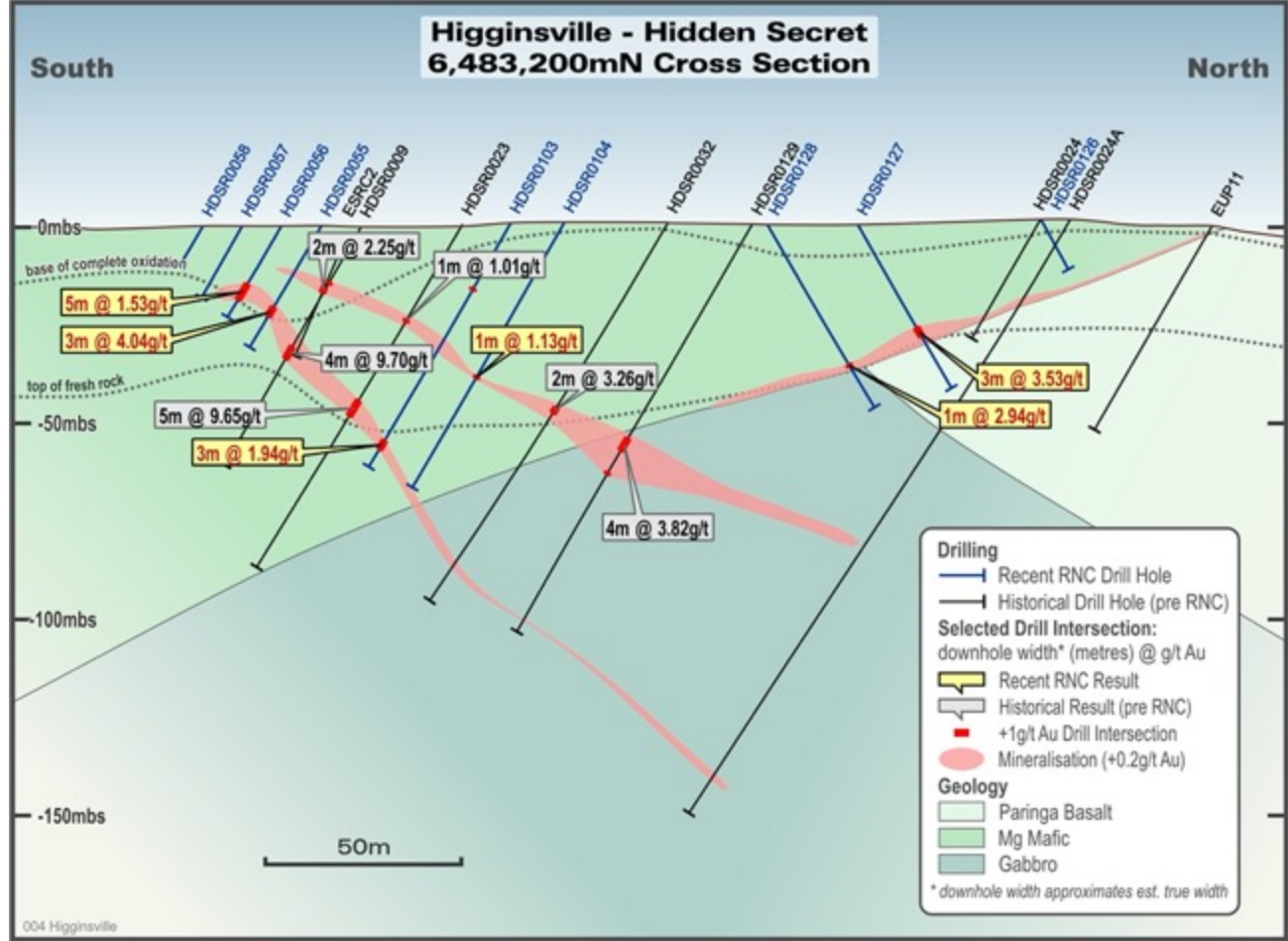


Historical underground workings with high grades at Hidden Secret

A review of records for the Hidden Secret area has revealed the historic “Hidden Secret North” mine where last known mining occurred in 1915.

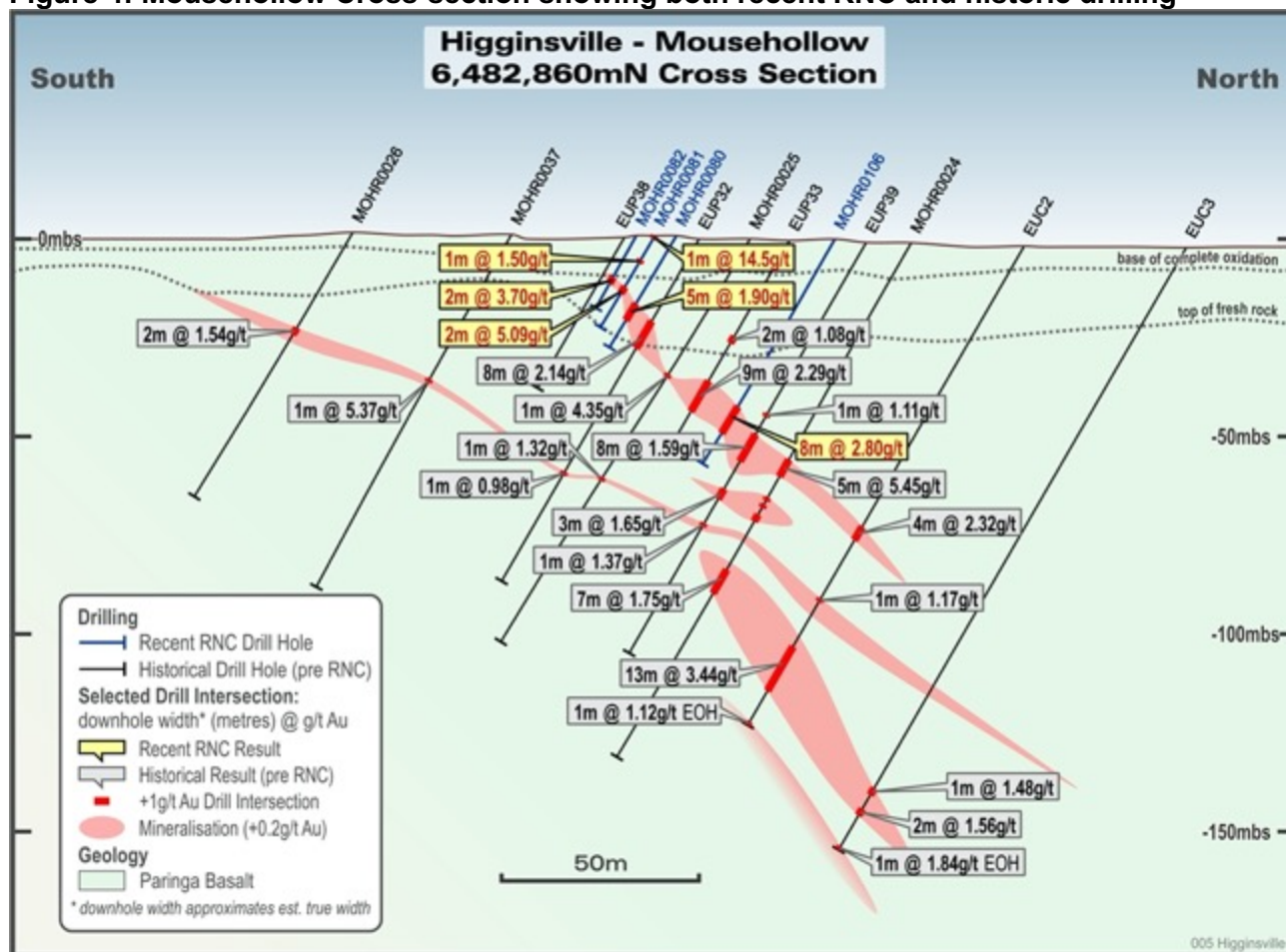
Multiple historic shafts in the area extend to depths up to 120 metres, with historic records showing grades as high as 210g/t over approximately 0.9m. The potential below these workings is yet to be tested and could provide an opportunity for additional high grade mineralization. A detailed review of previous exploration in the vicinity of the historic workings is in progress.

Figure 3: Hidden Secret Cross-section showing both recent RNC and historic drilling.



Note: Downhole drill intervals approximate estimated true widths.

Figure 4: Mousehollow Cross-section showing both recent RNC and historic drilling



Note: Downhole drill intervals approximate estimated true widths.

Historical Database Review – Corona Prospect

As previously announced, RNC is undertaking a review of Historic Mineral Resources and drill results at Higginsville. The Company is presently focused on the Higginsville Central area which is close to existing infrastructure, including the Higginsville mill. The Higginsville Central is defined by near surface gold deposits over 6 km of strike south of the past-producing Trident gold deposit which produced 1.05 Mozs (see Figure 1).

A review of previous exploration work completed by Alacer Gold Corp. (“Alacer”) has revealed a number of significant intersections, including the historical discovery of the Corona high grade, laminated quartz vein (the “Corona Prospect”) which is located approximately 2.5 km south of the HGO processing plant. The historical discovery hole, VIND047, **intersected 658g/t Au over 2.35 m** (1.6 m estimated true width). The drill hole intersected a laminated quartz vein with arsenopyrite, galena and abundant free gold mineralization (Alacer Gold Corp. news release dated January, 24, 2012).

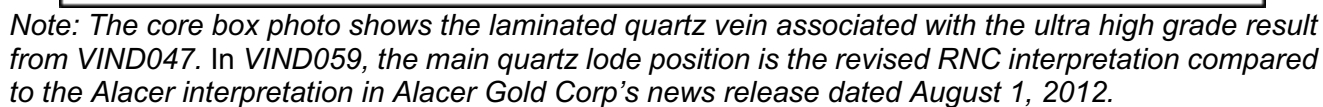
The ultra high grade mineralization (see Figure 5) occurs in an area approximately 150 metres to 180 metres below surface, centred around drill holes VIND047, VIND049, VIND076 and VIND092 (Alacer Gold Corp. news release, August 1, 2012). Drill intersections for these holes are listed below (tables showing additional historic results and drill hole locations can be found at the end of this release):

- VIND047: 657.9 g/t over 2.3 m downhole from 181.1 m (Estimated true width – 1.6 m)

- VIND049: 225.2 g/t over 1.9 m downhole from 201.5 m (Estimated true width – 1.3 m)
- VIND076: 60.9 g/t over 2.3 m downhole from 197.2 m (Estimated true width – 1.6 m)
- VIND092: 147.0 g/t over 0.6 m downhole from 165.7 m (Estimated true width – 0.4 m)

Historical drilling has shown the gold mineralization to be associated with a steeply east-dipping, north-south striking laminated quartz vein up to 2.0 metres wide (see Figure 5). The vein extends over 300 metres down dip, is continuous in strike over 50 to 100 metres lengths and is part of a more extensive 2 to 10 metre wide shear zone. Historical drilling indicates the ultra high grade mineralization is limited to 25 metres along strike and 90 metres down-dip as part of a more extensive, lower grade laminated quartz vein (*Alacer Gold Corp. news release, August 1, 2012*).

RNC has identified the Corona prospect as a high priority drill target for 2020 with initial drilling targeting near surface potential, up-dip of historical intersections.



Compliance Statement (JORC 2012 and NI 43-101)

The disclosure of scientific and technical information contained in this news release has been reviewed and approved by Stephen Devlin, Vice-President, VP Exploration & Growth, Salt Lake Mining Pty Ltd, a 100% owned subsidiary of RNC, a Qualified Person for the purposes of NI 43-101.

At the Higginsville Gold Operation reverse circulation chip sampling was conducted by RNC personnel. Samples are transported to Bureau Veritas Minerals Pty Ltd of Kalgoorlie and Perth for preparation and assaying by 40 gram (approx.) fire assay analytical method. Analytical accuracy and precision are monitored by the analysis of duplicates, additional blank material and certified standards inserted in the sample stream. Samples are weighed as received, dried and split to less than 3kg then pulverised by LM-5 to ensure a minimum 90% passing at $-75\mu\text{m}$.

The historical data referenced in this release has been reviewed under the supervision of Stephen Devlin, Vice-President, VP Exploration & Growth, Salt Lake Mining Pty Ltd, a 100% owned subsidiary of RNC, a Qualified Person for the purposes of NI 43-101, and is supported by relevant historic mineral resource reports which detail the QA/QC procedures used on drill samples and provide analysis of the results of all associated QA/QC samples including blanks, standards (CRM samples), check assays and duplicates. All drilling from 2004 to present followed industry standard practices, with pre-2004 historic drilling not detailed but assumed to be similar to current practices (sources for such historical drill results are identified where applicable above). A qualified person has not done sufficient work to classify the historical estimate as a current mineral resource and RNC is not treating the historical estimates as a current mineral resource.

About RNC Minerals

RNC is focused on growing gold production and reducing costs at its integrated Beta Hunt Gold Mine and Higginsville Gold Operations ("HGO") in Western Australia. The Higginsville treatment facility is a low-cost 1.4 Mtpa processing plant which is fed at capacity from RNC's underground Beta Hunt mine and open pit Higginsville mine. At Beta Hunt, a robust gold mineral resource and reserve is hosted in multiple gold shears, with gold intersections along a 4 km strike length remaining open in multiple directions. HGO is a highly prospective land package totaling approximately 1,800 square kilometers. In addition, RNC has a 28% interest in a nickel joint venture that owns the Dumont Nickel-Cobalt Project located in the Abitibi region of Quebec. Dumont contains the second largest nickel reserve and ninth largest cobalt reserve in the world. RNC has a strong Board and management team focused on delivering shareholder value. RNC's common shares trade on the TSX under the symbol RNX. RNC shares also trade on the OTCQX market under the symbol RNKLF.

Cautionary Statement Concerning Forward-Looking Statements

This news release contains "forward-looking information" including without limitation statements relating to the liquidity and capital resources of RNC, production guidance and the potential of the Beta Hunt Mine, Higginsville Gold Operation and Dumont Nickel Project.

Forward-looking statements involve known and unknown risks, uncertainties and other factors which may cause the actual results, performance or achievements of RNC to be materially different from any future results, performance or achievements expressed or implied by the forward-looking statements. Factors that could affect the outcome include, among others: future prices and the supply of metals; the results of drilling; inability to raise the money necessary to incur the expenditures required to retain and advance the properties; environmental liabilities (known and unknown); general business, economic, competitive, political and social uncertainties; results of exploration programs; accidents, labour disputes and other risks of the mining industry; political instability, terrorism, insurrection or war; or delays in obtaining governmental approvals, projected cash operating costs, failure to obtain regulatory or shareholder approvals. For a more detailed discussion of such risks and other factors that could cause actual results to differ materially from those expressed or implied by such forward-

looking statements, refer to RNC's filings with Canadian securities regulators, including the most recent Annual Information Form, available on SEDAR at www.sedar.com.

Although RNC has attempted to identify important factors that could cause actual actions, events or results to differ materially from those described in forward-looking statements, there may be other factors that cause actions, events or results to differ from those anticipated, estimated or intended. Forward-looking statements contained herein are made as of the date of this news release and RNC disclaims any obligation to update any forward-looking statements, whether as a result of new information, future events or results or otherwise, except as required by applicable securities laws.

Cautionary Statement Regarding the Higginsville Mining Operations

A production decision at the Higginsville gold operations was made by previous operators of the mine, prior to the completion of the acquisition of the Higginsville gold operations by RNC and RNC made a decision to continue production subsequent to the acquisition. This decision by RNC to continue production and, to the knowledge of RNC, the prior production decision were not based on a feasibility study of mineral reserves, demonstrating economic and technical viability, and, as a result, there may be an increased uncertainty of achieving any particular level of recovery of minerals or the cost of such recovery, which include increased risks associated with developing a commercially mineable deposit. Historically, such projects have a much higher risk of economic and technical failure. There is no guarantee that anticipated production costs will be achieved. Failure to achieve the anticipated production costs would have a material adverse impact on the Corporation's cash flow and future profitability. Readers are cautioned that there is increased uncertainty and higher risk of economic and technical failure associated with such production decisions.

For more information, please contact:

Rob Buchanan
Director, Investor Relations
T: (416) 363-0649
www.rncminerals.com

In Europe:
Swiss Resource Capital AG
Jochen Staiger
info@resource-capital.ch
www.resource-capital.ch

Table 1: Initial Results from 2020 Higginsville Exploration Drilling (February 27, 2020)

Prospect	Hole	Sub interval	From (m)	To (m)	Downhole Interval (m)	Estimated True Width (m)	Au (g/t)
Hidden Secret	HDSR0055		24.0	27.0	3.0	3.0	4.04
Hidden Secret	HDSR0056		17.0	22.0	5.0	5.0	1.53
Hidden Secret	HDSR0057		-	-	-	-	NSA
Hidden Secret	HDSR0058		-	-	-	-	NSA
Hidden Secret	HDSR0059		30.0	32.0	2.0	2.0	2.45
Hidden Secret	HDSR0060		-	-	-	-	NSA
Hidden Secret	HDSR0061		-	-	-	-	NSA
Hidden Secret	HDSR0062		18.0	22.0	4.0	4.0	1.85
Hidden Secret	HDSR0063		7.0	11.0	4.0	4.0	4.18
Hidden Secret	HDSR0064		0.0	2.0	2.0	2.0	2.25
Hidden Secret	HDSR0065		18.0	19.0	1.0	1.0	2.97
Hidden Secret			21.0	22.0	1.0	1.0	1.47
Hidden Secret	HDSR0066		6.0	9.0	3.0	3.0	2.72
Hidden Secret			11.0	12.0	1.0	1.0	1.39
Hidden Secret	HDSR0067		0.0	2.0	2.0	2.0	1.99
Hidden Secret	HDSR0068		-	-	-	-	NSA
Hidden Secret	HDSR0069		6.0	7.0	1.0	1.0	1.78
Hidden Secret	HDSR0070		-	-	-	-	NSA
Hidden Secret	HDSR0071		-	-	-	-	NSA
Hidden Secret	HDSR0072		10.0	12.0	2.0	2.0	1.28
Hidden Secret	HDSR0073		-	-	-	-	NSA
Hidden Secret	HDSR0074		-	-	-	-	NSA
Hidden Secret	HDSR0075		-	-	-	-	NSA
Hidden Secret	HDSR0076		22.0	25.0	3.0	3.0	5.18
Hidden Secret	HDSR0077		-	-	-	-	NSA
Hidden Secret	HDSR0078		-	-	-	-	NSA
Hidden Secret	HDSR0079		-	-	-	-	NSA
Hidden Secret	HDSR0080		-	-	-	-	NSA
Hidden Secret	HDSR0081		36.0	38.0	2.0	2.0	2.1
Hidden Secret	HDSR0082		32.0	35.0	3.0	3.0	2.73
Hidden Secret	HDSR0083		-	-	-	-	NSA
Hidden Secret	HDSR0084		-	-	-	-	NSA
Hidden Secret	HDSR0085	Including	17.0	21.0	4.0	4.0	24.79
Hidden Secret			18.0	19.0	1.0	1.0	92.6
Hidden Secret	HDSR0086		8.0	11.0	3.0	3.0	5.56
Hidden Secret	HDSR0087		17.0	20.0	3.0	3.0	0.84
Hidden Secret	HDSR0088		20.0	21.0	1.0	1.0	1.53
Hidden Secret	HDSR0089		4.0	5.0	1.0	1.0	1.52

Prospect	Hole	Sub interval	From (m)	To (m)	Downhole Interval (m)	Estimated True Width (m)	Au (g/t)
Hidden Secret			7.0	14.0	7.0	7.0	2.75
Hidden Secret	HDSR0090		11.0	12.0	1.0	1.0	1.17
Hidden Secret			16.0	17.0	1.0	1.0	2.27
Hidden Secret	HDSR0091		14.0	16.0	2.0	2.0	1.42
Hidden Secret	HDSR0092		6.0	12.0	6.0	6.0	2.76
Hidden Secret	HDSR0093		14.0	15.0	1.0	1.0	2.28
Hidden Secret	HDSR0094		-	-	-	-	NSA
Hidden Secret	HDSR0095		-	-	-	-	NSA
Hidden Secret	HDSR0096		49.0	55.0	6.0	6.0	2.56
Hidden Secret	HDSR0097		42.0	45.0	3.0	3.0	4.91
Hidden Secret			65.0	67.0	2.0	2.0	2.24
Hidden Secret	HDSR0098		45.0	52.0	7.0	7.0	6.04
Hidden Secret			49.0	52.0	3.0	3.0	12.24
Hidden Secret	HDSR0099		54.0	58.0	4.0	4.0	1.81
Hidden Secret	HDSR0100		11.0	12.0	1.0	1.0	1.01
Hidden Secret			53.0	54.0	1.0	1.0	8.87
Hidden Secret			63.0	66.0	3.0	3.0	2.79
Hidden Secret			77.0	82.0	5.0	5.0	2.05
Hidden Secret	HDSR0101		49.0	51.0	2.0	2.0	2.81
Hidden Secret	HDSR0102		39.0	40.0	1.0	1.0	1.35
Hidden Secret			42.0	43.0	1.0	1.0	1.35
Hidden Secret			66.0	69.0	3.0	3.0	1.85
Hidden Secret	HDSR0103		64.0	67.0	3.0	3.0	1.94
Hidden Secret	HDSR0104		45.0	46.0	1.0	1.0	1.13
Hidden Secret	HDSR0105		-	-	-	-	NSA
Hidden Secret	HDSR0106		4.0	5.0	1.0	1.0	1.66
Hidden Secret	HDSR0107		-	-	-	-	NSA
Hidden Secret	HDSR0108		27.0	28.0	1.0	1.0	1.9
Hidden Secret	HDSR0109		-	-	-	-	NSA
Hidden Secret	HDSR0110		24.0	25.0	1.0	1.0	4.37
Hidden Secret	HDSR0111		24.0	25.0	1.0	1.0	3.6
Hidden Secret	HDSR0112		-	-	-	-	NSA
Hidden Secret	HDSR0113		24.0	25.0	1.0	1.0	1.11
Hidden Secret			26.0	27.0	1.0	1.0	1.38
Hidden Secret	HDSR0114		26.0	27.0	1.0	1.0	4.1
Hidden Secret	HDSR0115		23.0	24.0	1.0	1.0	1.05
Hidden Secret			31.0	32.0	1.0	1.0	1.88
Hidden Secret	HDSR0116		40.0	42.0	2.0	2.0	2.83
Hidden Secret	HDSR0117		44.0	45.0	1.0	1.0	1.27

Prospect	Hole	Sub interval	From (m)	To (m)	Downhole Interval (m)	Estimated True Width (m)	Au (g/t)
Hidden Secret	HDSR0118		-	-	-	-	NSA
Hidden Secret	HDSR0119		-	-	-	-	NSA
Hidden Secret	HDSR0120		25.0	26.0	1.0	1.0	1.05
Hidden Secret	HDSR0121		-	-	-	-	NSA
Hidden Secret	HDSR0122		-	-	-	-	NSA
Hidden Secret	HDSR0123		29.0	31.0	2.0	2.0	3.87
Hidden Secret	HDSR0124		-	-	-	-	NSA
Hidden Secret	HDSR0125		41.0	43.0	2.0	2.0	4.99
Hidden Secret	HDSR0126		21.0	22.0	1.0	1.0	1.75
Hidden Secret	HDSR0127		30.0	33.0	3.0	3.0	3.53
Hidden Secret	HDSR0128		41.0	42.0	1.0	1.0	2.94
Hidden Secret	HDSR0129		63.0	67.0	4.0	4.0	3.82
Hidden Secret			73.0	74.0	1.0	1.0	3.33
Hidden Secret	HDSR0130		-	-	-	-	NSA
Hidden Secret	HDSR0131		-	-	-	-	NSA
Hidden Secret	HDSR0132		27.0	28.0	1.0	1.0	2.54
Hidden Secret	HDSR0133		-	-	-	-	NSA
Hidden Secret	HDSR0134		-	-	-	-	NSA
Hidden Secret	HDSR0135		12.0	14.0	2.0	2.0	4.51
Hidden Secret	HDSR0136	Including	24.0	28.0	4.0	4.0	15.14
Hidden Secret			25.0	26.0	1.0	1.0	47.8
Hidden Secret	HDSR0137		34.0	36.0	2.0	2.0	4.53
Hidden Secret	HDSR0138		-	-	-	-	NSA
Hidden Secret	HDSR0139		-	-	-	-	NSA
Hidden Secret	HDSR0140		13.0	14.0	1.0	1.0	2.64
Hidden Secret	HDSR0141		14.0	17.0	3.0	3.0	2.38
Hidden Secret	HDSR0142		16.0	18.0	2.0	2.0	4.02
Hidden Secret	HDSR0143		-	-	-	-	NSA
Hidden Secret	HDSR0144		21.0	23.0	2.0	2.0	1.92
Hidden Secret			30.0	31.0	1.0	1.0	3.5
Hidden Secret	HDSR0145		-	-	-	-	NSA
Hidden Secret	HDSR0146		-	-	-	-	NSA
Hidden Secret	HDSR0147		12.0	14.0	2.0	2.0	6.41
Hidden Secret	HDSR0148		-	-	-	-	NSA
Hidden Secret	HDSR0149		26.0	27.0	1.0	1.0	1.72
Hidden Secret	HDSR0150		33.0	35.0	2.0	2.0	3.93
Hidden Secret	HDSR0151		-	-	-	-	NSA
Hidden Secret	HDSR0152		-	-	-	-	NSA
Hidden Secret	HDSR0153		-	-	-	-	NSA

Prospect	Hole	Sub interval	From (m)	To (m)	Downhole Interval (m)	Estimated True Width (m)	Au (g/t)
Hidden Secret	HDSR0154		-	-	-	-	NSA
Hidden Secret	HDSR0155		-	-	-	-	NSA
Hidden Secret	HDSR0156		15.0	16.0	1.0	1.0	1.07
Hidden Secret	HDSR0157		-	-	-	-	NSA
Hidden Secret	HDSR0158		-	-	-	-	NSA
Hidden Secret	HDSR0159		-	-	-	-	NSA
Hidden Secret	HDSR0160		-	-	-	-	NSA
Hidden Secret	HDSR0161		-	-	-	-	NSA
Hidden Secret	HDSR0162		-	-	-	-	NSA
Mousehollow	MOHR0051		-	-	-	-	NSA
Mousehollow	MOHR0052		-	-	-	-	NSA
Mousehollow	MOHR0053		-	-	-	-	NSA
Mousehollow	MOHR0054		-	-	-	-	NSA
Mousehollow	MOHR0055		22.0	25.0	3.0	3.0	26.12
Mousehollow	MOHR0056		-	-	-	-	NSA
Mousehollow	MOHR0057		-	-	-	-	NSA
Mousehollow	MOHR0058		-	-	-	-	NSA
Mousehollow	MOHR0059		29.0	31.0	2.0	2.0	1.66
Mousehollow	MOHR0060		19.0	22.0	3.0	3.0	2.28
Mousehollow	MOHR0061		12.0	14.0	2.0	2.0	2.02
Mousehollow	MOHR0062		8.0	9.0	1.0	1.0	1.28
Mousehollow	MOHR0063		-	-	-	-	NSA
Mousehollow	MOHR0064		-	-	-	-	NSA
Mousehollow	MOHR0065		-	-	-	-	NSA
Mousehollow	MOHR0066		21.0	29.0	8.0	8.0	1.33
Mousehollow	MOHR0067		-	-	-	-	NSA
Mousehollow	MOHR0068		22.0	23.0	1.0	1.0	1.93
Mousehollow	MOHR0069		3.0	9.0	6.0	6.0	4.18
Mousehollow			15.0	17.0	2.0	2.0	1.52
Mousehollow			22.0	24.0	2.0	2.0	16.36
Mousehollow	MOHR0070		-	-	-	-	0
Mousehollow	MOHR0071		-	-	-	-	0
Mousehollow	MOHR0072		12.0	13.0	1.0	1.0	3.5
Mousehollow	MOHR0073		13.0	15.0	2.0	2.0	1.55
Mousehollow	MOHR0074		0.0	1.0	1.0	1.0	1.79
Mousehollow			20.0	26.0	6.0	6.0	1.99
Mousehollow	MOHR0075		0.0	19.0	19.0	19.0	3.33
Mousehollow	MOHR0076		3.0	7.0	4.0	4.0	1.09
Mousehollow	MOHR0077		11.0	21.0	10.0	10.0	3.45

Prospect	Hole	Sub interval	From (m)	To (m)	Downhole Interval (m)	Estimated True Width (m)	Au (g/t)
Mousehollow	MOHR0078		13.0	17.0	4.0	4.0	8.42
Mousehollow	MOHR0079		-	-	-	-	0
Mousehollow	MOHR0080		20.0	25.0	5.0	5.0	1.89
Mousehollow	MOHR0081		0.0	1.0	1.0	1.0	14.5
Mousehollow			15.0	17.0	2.0	2.0	5.09
Mousehollow	MOHR0082		12.0	14.0	2.0	2.0	3.7
Mousehollow	MOHR0083		-	-	-	-	0
Mousehollow	MOHR0084		-	-	-	-	0
Mousehollow	MOHR0085		-	-	-	-	0
Mousehollow			28.0	30.0	2.0	2.0	1.06
Mousehollow			35.0	40.0	5.0	5.0	3.68
Mousehollow	MOHR0087		23.0	24.0	1.0	1.0	1.03
Mousehollow	MOHR0088		-	-	-	-	0
Mousehollow	MOHR0089		-	-	-	-	0
Mousehollow	MOHR0090		-	-	-	-	0
Mousehollow	MOHR0091		-	-	-	-	0
Mousehollow	MOHR0092		-	-	-	-	0
Mousehollow	MOHR0093		13.0	14.0	1.0	1.0	1.95
Mousehollow	MOHR0094		-	-	-	-	0
Mousehollow	MOHR0095		-	-	-	-	0
Mousehollow	MOHR0096		-	-	-	-	0
Mousehollow	MOHR0097		-	-	-	-	0
Mousehollow	MOHR0098		-	-	-	-	0
Mousehollow	MOHR0099		-	-	-	-	0
Mousehollow	MOHR0100		-	-	-	-	0
Mousehollow	MOHR0101		-	-	-	-	0
Mousehollow	MOHR0102		13.0	14.0	1.0	1.0	3.8
Mousehollow	MOHR0103		-	-	-	-	0
Mousehollow	MOHR0104		-	-	-	-	0
Mousehollow	MOHR0105		-	-	-	-	0
Mousehollow	MOHR0106	Including	49.0	57.0	8.0	8.0	2.8
Mousehollow			49.0	50.0	1.0	1.0	6.29
Mousehollow			53.0	54.0	1.0	1.0	5.33
Mousehollow	MOHR0107	Including	32.0	34.0	2.0	2.0	4.36
Mousehollow			33.0	34.0	1.0	1.0	5.05
Mousehollow			48.0	49.0	1.0	1.0	5.55
Mousehollow	MOHR0108	Including	75.0	78.0	3.0	3.0	3.65
Mousehollow			77.0	78.0	1.0	1.0	5.79
Mousehollow	MOHR0109		43.0	44.0	1.0	1.0	4.66

Prospect	Hole	Sub interval	From (m)	To (m)	Downhole Interval (m)	Estimated True Width (m)	Au (g/t)
Mousehollow	MOHR0110		-	-	-	-	NSA
Mousehollow	MOHR0111	Including	24.0	25.0	1.0	1.0	1.62
Mousehollow			30.0	33.0	3.0	3.0	7.88
Mousehollow			30.0	32.0	2.0	2.0	10.59
Mousehollow	MOHR0112		17.0	18.0	1.0	1.0	2.19
Mousehollow	MOHR0113		7.0	8.0	1.0	1.0	5.1
Mousehollow			19.0	20.0	1.0	1.0	1.26
Mousehollow	MOHR0114		1.0	10.0	9.0	9.0	2.13
Mousehollow			12.0	14.0	2.0	2.0	1.43
Mousehollow			18.0	20.0	2.0	2.0	1.73
Mousehollow	MOHR0115		11.0	13.0	2.0	2.0	2.91
Mousehollow			16.0	19.0	3.0	3.0	1.07
Mousehollow			21.0	22.0	1.0	1.0	1.07
Mousehollow			26.0	27.0	1.0	1.0	1.3
Mousehollow	MOHR0116		42.0	43.0	1.0	1.0	1.21
Mousehollow	MOHR0117		-	-	-	-	NSA

*Reported gold grades > 1g/t Au over
 Note: 1m
 NSA - no significant assay (all < 1g/t)
 Un-cut gold grades*

Table 2: Alacer Gold Corp - Selected Historical Results from high grade Corona Quartz vein, 2012 Drilling

Prospect	Hole	Sub interval	From (m)	To (m)	Downhole Interval (m)	Estimated True Width (m)	Au (g/t)
Corona	VIND047		181.1	183.5	2.3	1.6	657.90
Corona		Including	183.0	183.5	0.4	0.3	773.95
Corona	VIND049		201.5	203.4	1.9	1.3	225.20
Corona		Including	201.5	202.4	1.0	0.7	422.80
Corona	VIND059		136.0	137.0	1.0	0.7	30.21
Corona	VIND076		197.2	199.5	2.3	1.6	60.89
Corona	VIND077		168.2	169.5	1.3	0.9	2.83
Corona	VIND090		230.0	231.0	1.1	0.7	8.54
Corona	VIND092		165.3	167.3	2.1	1.4	30.60
Corona		Including	165.7	166.1	0.4	0.3	147.05

Table 3: Location of Initial Results from 2020 Higginsville Exploration Drilling (February 27, 2020)

Prospect	Hole ID	MGA Easting (m)	MGA Northing (m)	Elevation (m)	Azi	Dip (deg)	Total Depth (m)
Hidden Secret	HDSR0055	387729	6483200	310	270	-60	36.0
Hidden Secret	HDSR0056	387719	6483197	310	270	-60	27.0
Hidden Secret	HDSR0057	387709	6483197	310	270	-60	21.0
Hidden Secret	HDSR0058	387699	6483200	310	270	-60	12.0
Hidden Secret	HDSR0059	387807	6483295	313	270	-60	48.0
Hidden Secret	HDSR0060	387794	6483295	312	270	-60	42.0
Hidden Secret	HDSR0061	387800	6483309	310	270	-60	36.0
Hidden Secret	HDSR0062	387744	6483240	310	270	-60	36.0
Hidden Secret	HDSR0063	387730	6483240	309	270	-60	24.0
Hidden Secret	HDSR0064	387715	6483240	309	270	-60	12.0
Hidden Secret	HDSR0065	387750	6483280	308	270	-60	36.0
Hidden Secret	HDSR0066	387740	6483280	308	270	-60	30.0
Hidden Secret	HDSR0067	387729	6483280	308	270	-60	24.0
Hidden Secret	HDSR0068	387720	6483280	307	270	-60	15.0
Hidden Secret	HDSR0069	387797	6483310	311	270	-60	24.0
Hidden Secret	HDSR0070	387730	6483321	306	270	-60	15.0
Hidden Secret	HDSR0071	387825	6483340	307	270	-60	36.0
Hidden Secret	HDSR0072	387815	6483340	308	270	-60	36.0
Hidden Secret	HDSR0073	387805	6483340	308	270	-60	36.0
Hidden Secret	HDSR0074	387795	6483340	308	270	-60	30.0
Hidden Secret	HDSR0075	387785	6483340	308	270	-60	24.0
Hidden Secret	HDSR0076	387774	6483340	307	270	-60	36.0
Hidden Secret	HDSR0077	387764	6483340	307	270	-60	12.0
Hidden Secret	HDSR0078	387750	6483340	306	270	-60	33.0
Hidden Secret	HDSR0079	387740	6483340	306	270	-60	24.0
Hidden Secret	HDSR0080	387730	6483340	306	270	-60	12.0
Hidden Secret	HDSR0081	387830	6483360	306	270	-60	42.0
Hidden Secret	HDSR0082	387819	6483360	306	270	-60	36.0
Hidden Secret	HDSR0083	387807	6483360	306	270	-60	75.0
Hidden Secret	HDSR0084	387799	6483360	306	270	-60	63.0
Hidden Secret	HDSR0085	387790	6483360	306	270	-60	82.0
Hidden Secret	HDSR0086	387940	6483080	305	270	-60	21.0
Hidden Secret	HDSR0087	387920	6483080	306	270	-60	21.0
Hidden Secret	HDSR0088	387910	6483080	306	270	-60	21.0
Hidden Secret	HDSR0089	387950	6483040	304	270	-60	21.0
Hidden Secret	HDSR0090	387930	6483040	305	270	-60	21.0
Hidden Secret	HDSR0091	387920	6483040	306	270	-60	21.0
Hidden Secret	HDSR0092	387960	6483005	303	270	-60	18.0
Hidden Secret	HDSR0093	387940	6483005	304	270	-60	18.0

Prospect	Hole ID	MGA Easting (m)	MGA Northing (m)	Elevation (m)	Azi	Dip (deg)	Total Depth (m)
Hidden Secret	HDSR0094	387930	6483005	305	270	-60	18.0
Hidden Secret	HDSR0095	387920	6483005	306	270	-60	18.0
Hidden Secret	HDSR0096	387790	6483281	313	270	-60	63.0
Hidden Secret	HDSR0097	387812	6483280	314	270	-60	75.0
Hidden Secret	HDSR0097	387812	6483280	314	270	-60	75.0
Hidden Secret	HDSR0098	387783	6483295	312	270	-60	57.0
Hidden Secret	HDSR0098	387783	6483295	312	270	-60	57.0
Hidden Secret	HDSR0099	387817	6483260	314	270	-60	82.0
Hidden Secret	HDSR0100	387814	6483240	313	270	-60	88.0
Hidden Secret	HDSR0100	387814	6483240	313	270	-60	88.0
Hidden Secret	HDSR0100	387814	6483240	313	270	-60	88.0
Hidden Secret	HDSR0100	387814	6483240	313	270	-60	88.0
Hidden Secret	HDSR0101	387767	6483220	311	270	-60	72.0
Hidden Secret	HDSR0102	387784	6483220	312	270	-60	72.0
Hidden Secret	HDSR0102	387784	6483220	312	270	-60	72.0
Hidden Secret	HDSR0102	387784	6483220	312	270	-60	72.0
Hidden Secret	HDSR0103	387778	6483200	311	270	-60	72.0
Hidden Secret	HDSR0104	387791	6483200	311	270	-60	78.0
Hidden Secret	HDSR0105	387877	6482877	297	90	-60	78.0
Hidden Secret	HDSR0106	387920	6482925	300	90	-60	36.0
Hidden Secret	HDSR0107	387880	6482925	300	90	-60	72.0
Hidden Secret	HDSR0108	387900	6483005	305	90	-60	42.0
Hidden Secret	HDSR0109	387970	6483040	304	90	-60	12.0
Hidden Secret	HDSR0110	387885	6483080	308	90	-60	42.0
Hidden Secret	HDSR0111	387866	6483079	309	90	-60	54.0
Hidden Secret	HDSR0112	387845	6483079	310	90	-60	72.0
Hidden Secret	HDSR0113	387884	6483037	311	90	-60	54.0
Hidden Secret	HDSR0113	387884	6483037	311	90	-60	54.0
Hidden Secret	HDSR0114	387871	6483033	312	90	-60	54.0
Hidden Secret	HDSR0115	387851	6483034	313	90	-60	72.0
Hidden Secret	HDSR0115	387851	6483034	313	90	-60	72.0
Hidden Secret	HDSR0116	387874	6483005	312	90	-60	60.0
Hidden Secret	HDSR0117	387861	6483005	313	90	-60	72.0
Hidden Secret	HDSR0118	387843	6482978	311	90	-60	78.0
Hidden Secret	HDSR0119	387955	6483119	307	90	-60	18.0
Hidden Secret	HDSR0120	387894	6483120	307	90	-60	42.0
Hidden Secret	HDSR0121	387875	6483119	308	90	-60	51.0
Hidden Secret	HDSR0122	387912	6483159	310	90	-60	27.0
Hidden Secret	HDSR0123	387893	6483159	309	90	-60	36.0
Hidden Secret	HDSR0124	387874	6483159	308	90	-60	45.0

Prospect	Hole ID	MGA Easting (m)	MGA Northing (m)	Elevation (m)	Azi	Dip (deg)	Total Depth (m)
Hidden Secret	HDSR0125	387853	6483159	309	90	-60	54.0
Hidden Secret	HDSR0126	387913	6483195	312	90	-60	36.0
Hidden Secret	HDSR0127	387866	6483196	310	90	-60	48.0
Hidden Secret	HDSR0128	387843	6483196	310	90	-60	54.0
Hidden Secret	HDSR0129	387839	6483195	310	270	-60	120.0
Hidden Secret	HDSR0129	387839	6483195	310	270	-60	120.0
Hidden Secret	HDSR0130	387661	6483160	311	270	-60	18.0
Hidden Secret	HDSR0131	387680	6483160	310	270	-60	30.0
Hidden Secret	HDSR0132	387700	6483160	310	270	-60	42.0
Hidden Secret	HDSR0133	387720	6483161	310	270	-60	52.0
Hidden Secret	HDSR0134	387769	6483361	305	270	-60	16.0
Hidden Secret	HDSR0135	387780	6483361	306	270	-60	21.0
Hidden Secret	HDSR0136	387779	6483341	307	270	-60	36.0
Hidden Secret	HDSR0136	387779	6483341	307	270	-60	36.0
Hidden Secret	HDSR0137	387790	6483341	308	270	-60	48.0
Hidden Secret	HDSR0138	387780	6483380	305	270	-60	12.0
Hidden Secret	HDSR0139	387791	6483379	306	270	-60	18.0
Hidden Secret	HDSR0140	387800	6483381	306	270	-60	21.0
Hidden Secret	HDSR0141	387810	6483381	305	270	-60	24.0
Hidden Secret	HDSR0142	387820	6483381	305	270	-60	30.0
Hidden Secret	HDSR0143	387829	6483381	305	270	-60	36.0
Hidden Secret	HDSR0144	387843	6483380	305	270	-60	45.0
Hidden Secret	HDSR0144	387843	6483380	305	270	-60	45.0
Hidden Secret	HDSR0145	387781	6483400	305	270	-60	12.0
Hidden Secret	HDSR0146	387789	6483401	305	270	-60	18.0
Hidden Secret	HDSR0147	387800	6483401	305	270	-60	24.0
Hidden Secret	HDSR0148	387810	6483400	305	270	-60	24.0
Hidden Secret	HDSR0149	387820	6483400	304	270	-60	30.0
Hidden Secret	HDSR0150	387830	6483400	305	270	-60	36.0
Hidden Secret	HDSR0151	387840	6483400	305	270	-60	39.0
Hidden Secret	HDSR0152	387776	6483426	304	270	-60	18.0
Hidden Secret	HDSR0153	387785	6483425	304	270	-60	21.0
Hidden Secret	HDSR0154	387796	6483425	304	270	-60	24.0
Hidden Secret	HDSR0155	387805	6483425	304	270	-60	27.0
Hidden Secret	HDSR0156	387815	6483425	304	270	-60	30.0
Hidden Secret	HDSR0157	387824	6483425	304	270	-60	36.0
Hidden Secret	HDSR0158	387835	6483426	304	270	-60	39.0
Hidden Secret	HDSR0159	387780	6483460	303	270	-60	39.0
Hidden Secret	HDSR0160	387800	6483460	303	270	-60	45.0
Hidden Secret	HDSR0161	387820	6483460	303	270	-60	60.0

Prospect	Hole ID	MGA Easting (m)	MGA Northing (m)	Elevation (m)	Azi	Dip (deg)	Total Depth (m)
Hidden Secret	HDSR0162	387840	6483460	303	270	-60	72.0
Mousehollow	MOHR0051	388200	6482700	293	270	-60	30.0
Mousehollow	MOHR0052	388190	6482700	293	270	-60	21.0
Mousehollow	MOHR0053	388180	6482700	293	270	-60	15.0
Mousehollow	MOHR0054	388170	6482700	294	270	-60	9.0
Mousehollow	MOHR0055	388212	6482721	293	270	-60	30.0
Mousehollow	MOHR0056	388188	6482721	293	270	-60	18.0
Mousehollow	MOHR0057	388180	6482721	294	270	-60	15.0
Mousehollow	MOHR0058	388170	6482721	294	270	-60	9.0
Mousehollow	MOHR0059	388220	6482736	293	270	-60	38.0
Mousehollow	MOHR0060	388210	6482735	294	270	-60	33.0
Mousehollow	MOHR0061	388200	6482735	294	270	-60	27.0
Mousehollow	MOHR0062	388190	6482735	294	270	-60	21.0
Mousehollow	MOHR0063	388180	6482735	294	270	-60	15.0
Mousehollow	MOHR0064	388170	6482735	294	270	-60	12.0
Mousehollow	MOHR0065	388210	6482806	295	270	-60	54.0
Mousehollow	MOHR0066	388185	6482820	295	270	-60	39.0
Mousehollow	MOHR0067	388164	6482820	295	270	-60	21.0
Mousehollow	MOHR0068	388197	6482760	294	270	-60	39.0
Mousehollow	MOHR0069	388175	6482760	294	270	-60	24.0
Mousehollow	MOHR0069	388175	6482760	294	270	-60	24.0
Mousehollow	MOHR0069	388175	6482760	294	270	-60	24.0
Mousehollow	MOHR0070	388156	6482760	295	270	-60	18.0
Mousehollow	MOHR0071	388145	6482760	295	270	-60	12.0
Mousehollow	MOHR0072	388184	6482780	295	270	-60	30.0
Mousehollow	MOHR0073	388175	6482780	295	270	-60	30.0
Mousehollow	MOHR0074	388165	6482780	295	270	-60	27.0
Mousehollow	MOHR0074	388165	6482780	295	270	-60	27.0
Mousehollow	MOHR0075	388155	6482780	295	270	-60	21.0
Mousehollow	MOHR0076	388145	6482780	295	270	-60	18.0
Mousehollow	MOHR0077	388170	6482808	295	270	-60	24.0
Mousehollow	MOHR0078	388165	6482808	295	270	-60	18.0
Mousehollow	MOHR0079	388160	6482808	295	270	-60	15.0
Mousehollow	MOHR0080	388190	6482855	296	270	-60	33.0
Mousehollow	MOHR0081	388185	6482855	296	270	-60	27.0
Mousehollow	MOHR0082	388180	6482855	296	270	-60	21.0
Mousehollow	MOHR0083	388190	6482880	296	270	-60	21.0
Mousehollow	MOHR0084	388185	6482880	296	270	-60	18.0
Mousehollow	MOHR0085	388180	6482880	296	270	-60	15.0
Mousehollow	MOHR0086	388215	6482890	296	270	-60	45.0

Prospect	Hole ID	MGA Easting (m)	MGA Northing (m)	Elevation (m)	Azi	Dip (deg)	Total Depth (m)
Mousehollow	MOHR0086	388215	6482890	296	270	-60	45.0
Mousehollow	MOHR0087	388205	6482890	296	270	-60	36.0
Mousehollow	MOHR0088	388200	6482900	296	270	-60	33.0
Mousehollow	MOHR0089	388195	6482900	296	270	-60	27.0
Mousehollow	MOHR0090	388361	6482980	293	270	-60	36.0
Mousehollow	MOHR0091	388347	6482980	294	270	-60	27.0
Mousehollow	MOHR0092	388284	6483060	296	270	-60	36.0
Mousehollow	MOHR0093	388272	6483059	296	270	-60	27.0
Mousehollow	MOHR0094	388319	6483103	296	270	-60	27.0
Mousehollow	MOHR0095	388306	6483104	296	270	-60	27.0
Mousehollow	MOHR0096	388293	6483104	296	270	-60	27.0
Mousehollow	MOHR0097	388338	6483196	297	270	-60	27.0
Mousehollow	MOHR0098	388325	6483197	298	270	-60	27.0
Mousehollow	MOHR0099	388313	6483197	298	270	-60	27.0
Mousehollow	MOHR0100	388353	6483300	299	270	-60	27.0
Mousehollow	MOHR0101	388340	6483300	299	270	-60	27.0
Mousehollow	MOHR0102	388366	6483400	295	270	-60	27.0
Mousehollow	MOHR0103	388353	6483400	296	270	-60	27.0
Mousehollow	MOHR0104	388341	6483401	296	270	-60	27.0
Mousehollow	MOHR0105	388357	6483300	298	270	-60	27.0
Mousehollow	MOHR0106	388231	6482857	295	270	-60	66.0
Mousehollow	MOHR0106	388231	6482857	295	270	-60	66.0
Mousehollow	MOHR0106	388231	6482857	295	270	-60	66.0
Mousehollow	MOHR0107	388207	6482822	295	270	-60	60.0
Mousehollow	MOHR0107	388207	6482822	295	270	-60	60.0
Mousehollow	MOHR0107	388207	6482822	295	270	-60	60.0
Mousehollow	MOHR0108	388226	6482822	295	270	-60	78.0
Mousehollow	MOHR0108	388226	6482822	295	270	-60	78.0
Mousehollow	MOHR0109	388220	6482700	295	270	-60	45.0
Mousehollow	MOHR0110	388239	6482699	292	270	-60	66.0
Mousehollow	MOHR0111	388222	6482719	293	270	-60	66.0
Mousehollow	MOHR0111	388222	6482719	293	270	-60	66.0
Mousehollow	MOHR0111	388222	6482719	293	270	-60	66.0
Mousehollow	MOHR0112	388233	6482719	293	270	-60	45.0
Mousehollow	MOHR0113	388194	6482735	294	270	-60	60.0
Mousehollow	MOHR0113	388194	6482735	294	270	-60	60.0
Mousehollow	MOHR0114	388151	6482779	295	270	-60	48.0
Mousehollow	MOHR0114	388151	6482779	295	270	-60	48.0
Mousehollow	MOHR0114	388151	6482779	295	270	-60	48.0
Mousehollow	MOHR0115	388160	6482779	295	270	-60	48.0

Prospect	Hole ID	MGA Easting (m)	MGA Northing (m)	Elevation (m)	Azi	Dip (deg)	Total Depth (m)
Mousehollow	MOHR0115	388160	6482779	295	270	-60	48.0
Mousehollow	MOHR0115	388160	6482779	295	270	-60	48.0
Mousehollow	MOHR0115	388160	6482779	295	270	-60	48.0
Mousehollow	MOHR0116	388171	6482780	295	270	-60	58.0
Mousehollow	MOHR0117	388179	6482780	295	270	-60	66.0

Table 4: Alacer Gold Corp - Selected Drill holes, 2012 Drilling

Prospect	Hole ID	MGA Easting (m)	MGA Northing (m)	Elevation (m)	Azi	Dip (deg)	Total Depth (m)
Corona	VIND047	379795	6485981	295	269	-62	1242.5
Corona	VIND049	379798	6485981	295	268	-68	261.3
Corona	VIND059	379760	6485979	296	270	-69	189.4
Corona	VIND076	379817	6485963	295	274	-61	252.3
Corona	VIND077	379813	6485963	295	280	-53	219.0
Corona	VIND090	379839	6485982	295	267	-60	264.3
Corona	VIND092	379793	6485984	296	270	-60	207.2